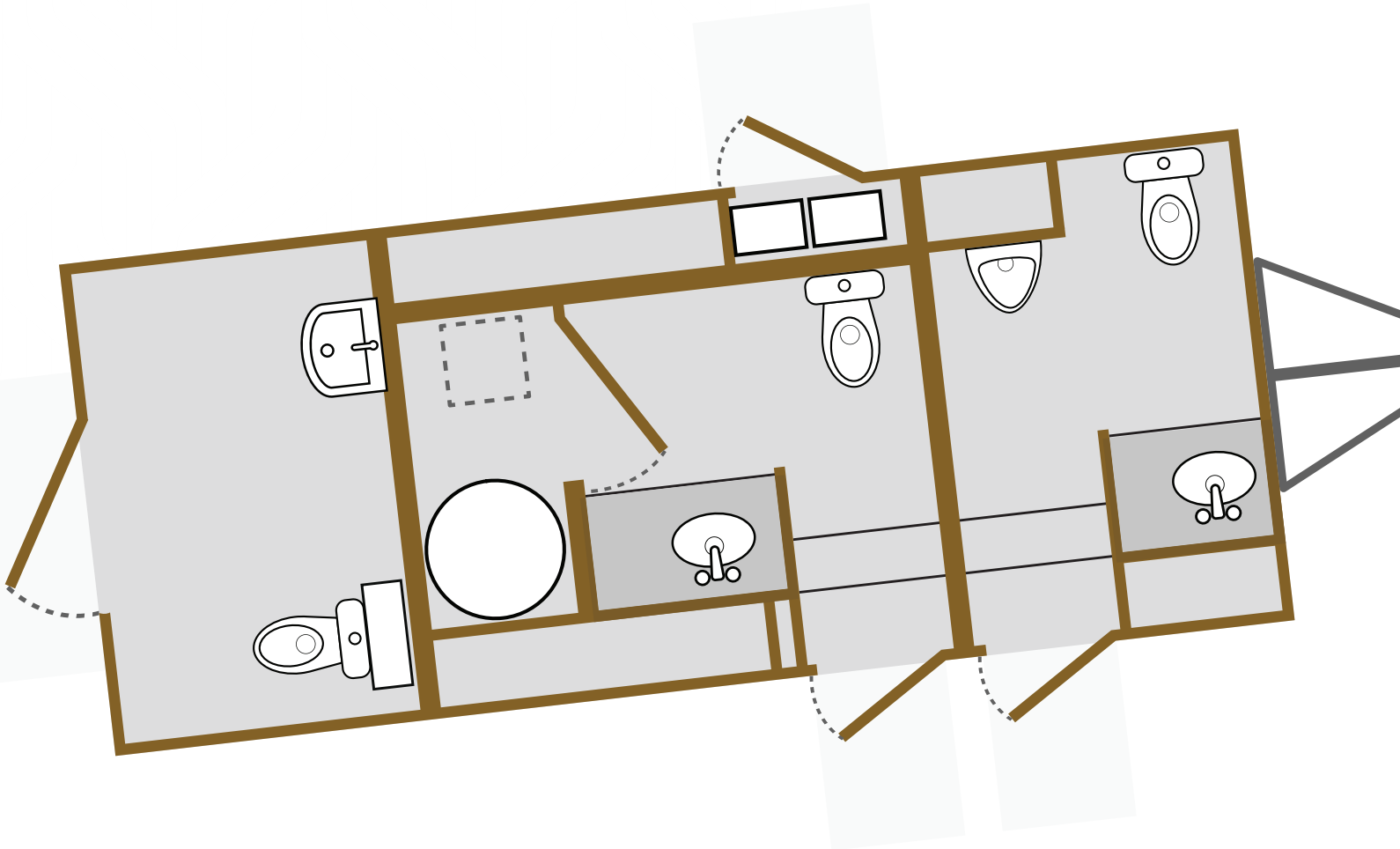
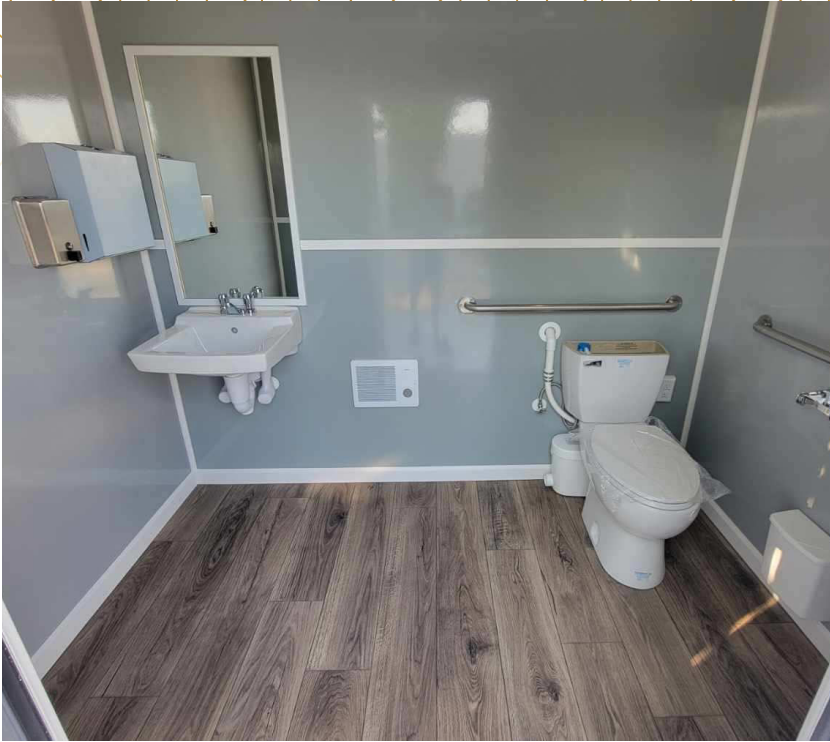


20' ADA Restroom Trailer Wide Body / Fresh Water *3 Private Stations*



Fresh water tank:	200 gal.	Ball hitch:	2 5/16"
Waste tank:	412 gal.	Bumper:	13"
Weight (approx):	9,440 lbs.	Axle(s):	2
Length (body):	20' 4"	Stations:	3 (1 ADA Compliant)
Height:	11' 10"	Keyed Doors:	5 (1 master key)
Width:	8' 4"	Exterior Lights:	yes (above each door)
Tongue:	52"	Stabilizing Jacks:	2 front, 2 back

20' ADA Restroom Trailer / 3 Private Stations



STANDARD FEATURES

- ADA compliant turning radius interior
- ADA compliant flush toilet
- ADA compliant interior handrail system
- ADA compliant 36x78" entry door with deck lighting
- ADA compliant door handle and lock
- ADA compliant 60x60" entrance platform with handrails
- ADA compliant ramp system
- ADA compliant paper towel and soap dispensers
- Hydraulic lift/lowering system
- 2x4" steel main frame construction

OPTIONAL FEATURES

- In-wall heaters in restrooms
- Winter package*
- Auxiliary 1/2 hp pump and reservoir tank
- Premium fixture package

* Winter package includes: Insulated waste tank with heaters, banjo dump valve and room heaters.